

# Grow in Growing NAGOYA





## Take a leap forward in growing Nagoya!

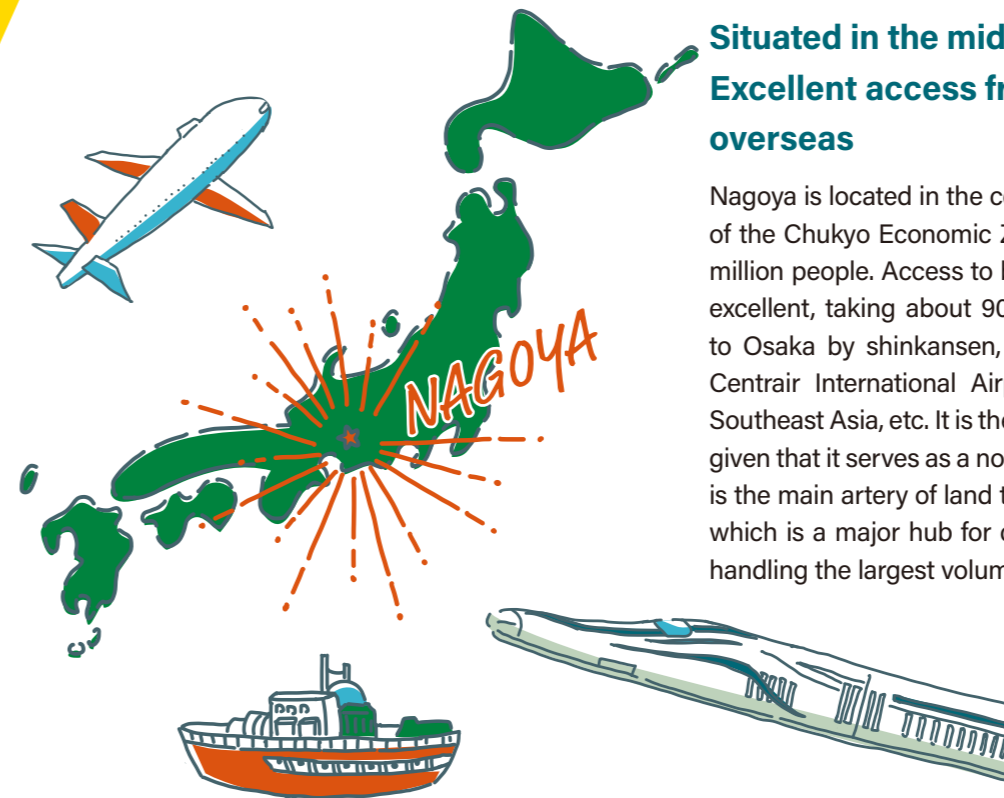
Nagoya is located in the center of Japan, where it has grown to be the center of the Chukyo Economic Zone, and is now accelerating its growth into the future.

This is the perfect time to unleash the potential of your company and accelerate growth in Nagoya, a city in which the town, businesses, and people continue to grow.



### You will grow in Nagoya because of its good access to transportation

*Location*



#### Situated in the middle of Japan! Excellent access from the rest of Japan and overseas

Nagoya is located in the center of Japan and is the central city of the Chukyo Economic Zone with a population of about 2.3 million people. Access to both the rest of Japan and abroad is excellent, taking about 90 minutes to Tokyo and 50 minutes to Osaka by shinkansen, and direct flights from the Chubu Centrair International Airport to major cities in China and Southeast Asia, etc. It is the perfect location for doing business, given that it serves as a node of the expressway network which is the main artery of land transportation, and has Nagoya Port which is a major hub for domestic and international logistics, handling the largest volume of cargo in Japan.

### You will grow in Nagoya because of its big projects

*Future*



#### Hosting Asia's largest sports festival

Asia's largest sports festival, held every four years, the 20th Asian Games (Aichi-Nagoya 2026) and Aichi-Nagoya 2026 Asian Para Games will be held in Nagoya and Aichi prefecture in 2026. Asia's top athletes will engage in heated battle, including at the main venue of Paloma Mizuho Stadium.



#### Opening of the Linear Chuo Shinkansen

Travel time between Tokyo and Nagoya will be reduced significantly, to about 40 minutes, with the partial opening of the Linear Chuo Shinkansen from 2027.

Also, when the entire line opens to Osaka in the future, the three major metropolitan areas will be connected by about one hour, forming the world's largest wide-area economic region (super-mega-region) of 70 million people with Nagoya as its node.



Courtesy of Central Japan Railway Company



## You will grow in Nagoya because its city is being renewed

*Business district*



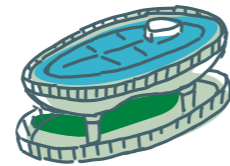
### "Meieki Area," the gateway to Nagoya

Nagoya Station has great access to Tokyo and Osaka, with more than 1 million passengers using the station every day. In particular, the eastern side of the station which connects to the "Sakae Area" has been rapidly developing as a business district with the continued construction of skyscrapers in recent years. Redevelopment is progressing at a fast pace and further growth is expected as a gateway to Nagoya in preparation for the opening of the Linear Chuo Shinkansen from 2027.



### "Sakae Area," the commercial center of Nagoya

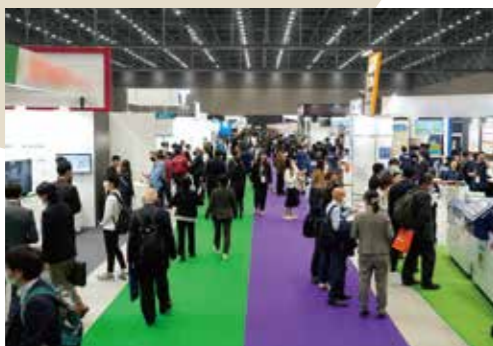
This is Nagoya's representative commercial area, which is home to many attractive spots such as the symbolic Chubu Electric Power MIRAI TOWER (Formerly Nagoya TV Tower), Oasis 21, and Hisaya-odori Park. The potential of this area as a business district is increasing, with several large building complexes scheduled to open in the future.



Courtesy of Nagoya Convention and Visitors Bureau

## You will grow in Nagoya because of connections with many companies

*Linkage*



### Location of about 80,000 companies

There are about 80,000 companies in Nagoya, employing more than 1.45 million people. The economy is active, with total company sales reaching about JPY53 trillion\*.

### Holding large-scale industrial exhibitions

Nagoya has well-equipped large-scale exhibition halls such as the Nagoya International Exhibition Hall (Port Messe Nagoya), where exhibitions such as Japan's largest cross-industry exchange exhibition "Messe Nagoya" are held, creating opportunities to start new businesses.

### A new hub for exchange and co-creation

Nagoya Innovator's Garage has been set up in the Sakae Area as a hub for creating innovation and exchange, and the startup development hub, Nagono Campus is established in the Meieki Area, supporting company exchanges and co-creation.



\*Economic Census 2021 - Activity Survey (Final Report)

## You will grow in Nagoya because of its abundant human resources

*Human resources*



### Top class universities and student numbers among the 20 Ordinance-designated Cities

There are 24 universities in Nagoya, with more than 100,000 students\*, both of which are the second largest among Japan's 20 ordinance-designated cities, many of whom will be looking to find employment within the prefecture. Universities are moving into the city and developing new departments, and this is expected to be a huge advantage for companies looking to acquire human resources.



### Creation of startups out of universities and the promotion of industry-academia-government collaboration

There are active efforts underway to create university-based startups, including "Tongali," an entrepreneur development project by a consortium of universities in the Tokai area. Nagoya Science Park also has a concentration of public research institutions and R&D companies, promoting research and development through industry-academia-government collaboration.



\*Basic School Survey 2022 (Final Report)

## You will grow in Nagoya because of its friendliness to workers and families

*Life*



### Peace of mind for families raising children (Children's medical expense subsidy system)

Subsidies are provided for out-of-pocket children's medical expenses until the end of the fiscal year in which they turn 18, and in principle, medical institutions in Aichi prefecture can be used free of charge with a child medical certificate.

### Helping families raise their children (Twilight School)

Elementary school facilities are used after school etc., for a project that fosters the independence, sociability, and creativity of children through playing, learning, experience, and interaction.



### Great for families raising children (Fulfilling educational facilities)

There are many appealing educational facilities in Nagoya, including the world's largest planetarium dome in the Nagoya City Science Museum, the Higashiyama Zoo and Botanical Gardens which boasts the largest number of animal species on display in Japan, the Port of Nagoya Public Aquarium, the Nagoya City Art Museum, and the Nagoya City Museum.



*Grow in Growing NAGOYA*

**An extensive array of subsidies are available to support companies expanding into Nagoya.**

There is a list of subsidies that support the expansion of businesses. For details, please see the "Nagoya Business Advancement Support Site" subsidy information page.



**Companies relocating their head office functions to the City of Nagoya**

**Subsidy for promoting the relocation of head office functions, etc.**

Eligible Companies	Companies relocating their head office functions to the City of Nagoya	
Subsidy Details	Rental	Up to 50% of building rent expenses (36 months) (up to JPY100 million)
	Owned	Up to 12% of building construction or acquisition expenses (up to JPY1 billion)
	Shared	Up to 50% of relocation expenses and equipment purchase expenses, etc.
	Additions	Additional cost of head office relocation registration (up to JPY5 million) Additional employment expenses (up to JPY1 million per person)

- \* Head office functions include the company's decision-making body as well as departments that oversee company-wide operations.
- \* Subsidy amounts and requirements (total floor area, number of employees, and required investment) depend on the area relocating from (Tokyo's 23 wards, other areas) and company size (SME, large company).
- \* Applications must be made at least 30 days before the subsidized project start date (rental contract date, construction contract date).
- \* Companies that have been established for less than five years and those relocating from Aichi, Gifu or Mie prefectures are not eligible for this subsidy.



**Companies opening their first office in the City of Nagoya**

**Subsidy for the promotion of business advancement into the City of Nagoya**

Eligible Companies	ICT companies, foreign companies, startup companies, growth companies	
Subsidy Details	50% of office rent (12 months) (up to JPY10 million)	
	Additional cost of head office relocation registration (up to JPY1 million)	

- \* "Growth Companies" are companies with JPY10 million or more of capital and JPY100 million or more of most recent sales, or JPY10 million or more of ordinary income.
- \* Subsidy requirements differ for each type of eligible company (total floor area, number of employees, number of years since establishment).
- \* Applications must be made by the day before the rental contract date of the subsidized facility.
- \* In principle, companies established for less than three years (excluding start-ups) or companies with an existing office in the City of Nagoya are not eligible for this subsidy.



**Companies building a new head office, offices, factories, or research facilities in the City of Nagoya**

**Industrial location reinforcement promotion subsidy**

Eligible Companies	Companies establishing a new head office (all industries) Companies building new offices, factories or research facilities (information and communications/manufacturing industries)
Subsidy Details	10% of the taxable value of fixed asset/urban planning taxes for facilities eligible for subsidies (up to JPY500 million)

- \* Subsidy requirements (amount of investment, number of employees) differ for each type and size of company (SME, large companies).
- \* If a company that has had its head office in the City of Nagoya for 50 years or more rebuilds its head office, the subsidy rate will be 20%.
- \* In the case of factories and research facilities, machinery and equipment with a unit price of JPY10 million or more are also eligible for subsidy.
- \* Applications must be made at least 30 days before the start of construction.
- \* In principle, companies established for less than three years are not eligible for this subsidy.



**Companies moving into incubation facilities in the City of Nagoya**

**Urban industrial research facility opening subsidy/reduction system**

Eligible Companies	Companies moving into next phase incubator facilities in the City of Nagoya <ul style="list-style-type: none"> <li>● Nagono Campus</li> <li>● Nagoya Business Incubator (Navi Kanayama/Shirakane)</li> <li>● Design Lab</li> <li>● Creation Core Nagoya</li> <li>● Nagoya Life Science Incubator (NALIC)</li> <li>● Science Exchange Plaza Incubator</li> </ul>
Subsidy Details	30% of facility rent (subsidy/reduction) up to 60 months/JPY1.5 million per year

- \* SMEs established within the last five years are eligible.
- \* Requirements such as target industry apply differently to certain facilities.



**Grow**  
*in Growing* **NAGOYA**



---

**Contact:**

---

*Information*

**Domestic and International Industrial & Commercial  
Properties Division, Innovation Promotion Department,  
Economic Affairs Bureau, City of Nagoya**

**TEL.052-972-2423**

FAX : 052-972-4135

MAIL : a2423@keizai.city.nagoya.lg.jp



**Nagoya Business Advancement Support Site**

<https://nagoya-potential.jp/en/>

